



Toric I.O.L.'s : Digital / Manual Marking



S. MAHJOUB, K. BEN AMOR ,A. BEN SAID,
K. MGAETH, O. TRABELSI, B. BOUASSIDA & A. TRABELSI

Les Ophtalmologistes Associés de Tunis
NADI AL BASSAR

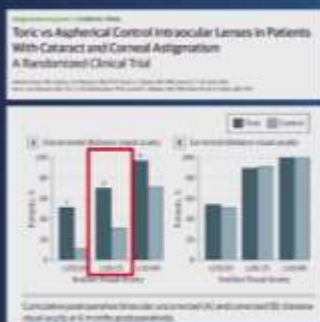
Clinique Ophtalmologique de Tunis

(ISO 9002)

CAIRO'2019



Toric I.O.L.'s



- A multicenter RCT with bilateral cataract and corneal astigmatism of at least 2.25 [D] randomized to receive either toric (n = 41) or monofocal IOL (n = 83)
- UDVA ≥20/25: 78% in the toric group and 31% in monofocal group (P < .001)
- Spectacle independency: 84% in toric vs. 31% in monofocal group (P < .001)

Water JAMA Ophthalmol 2014;32:3462





Manual Marking



Digital Marking



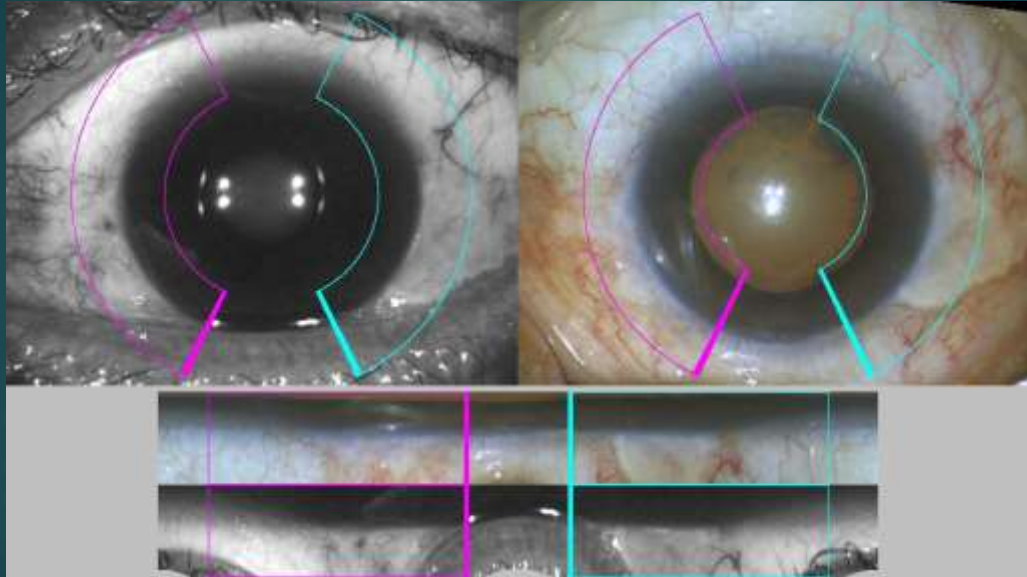


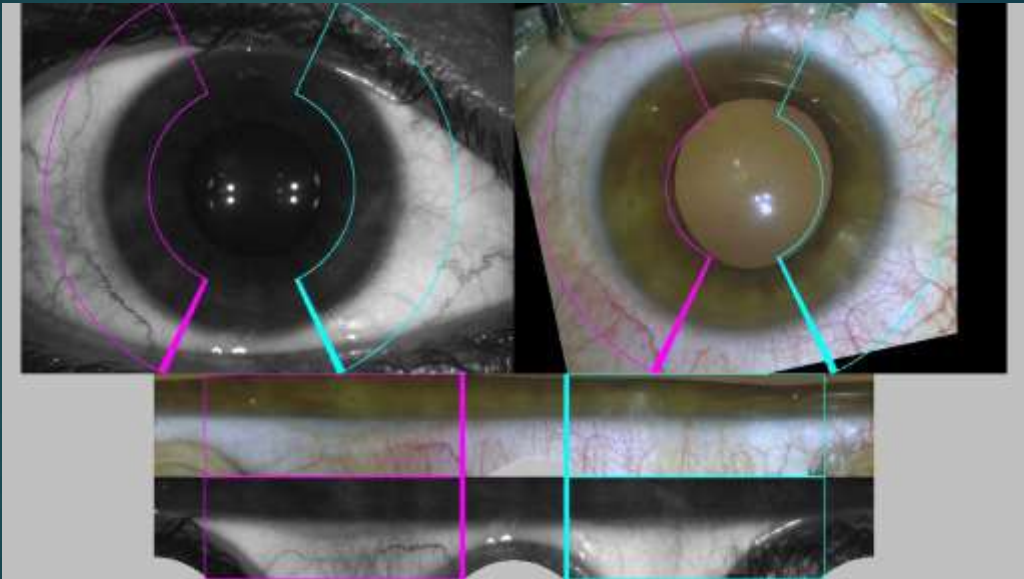
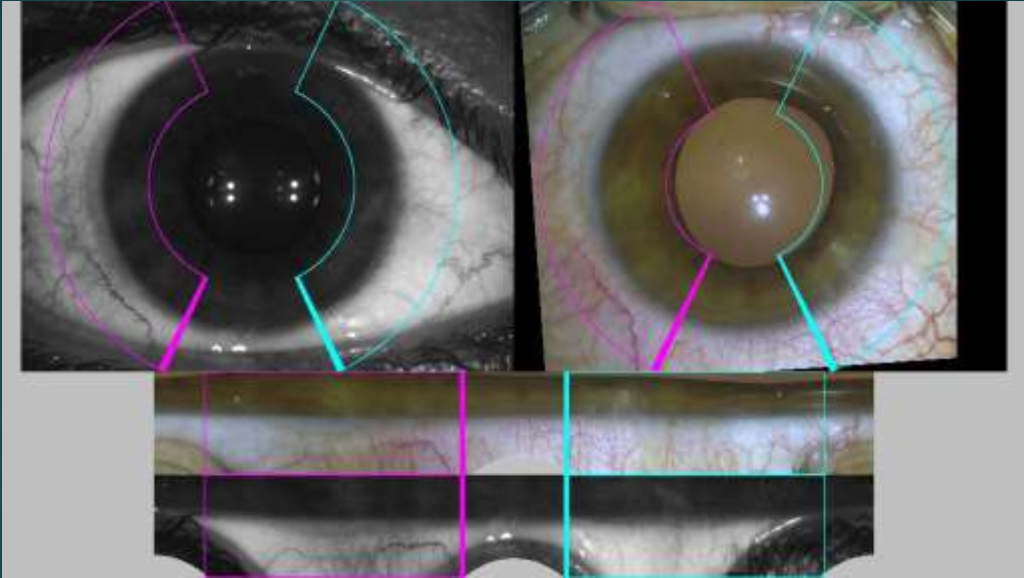
Date next collage: 25/07/2019 No: DC-0987661234 Resultat: OK
 Date de la mesure: 25/02/2018 n: 1,3375 CVD: 12,00 mm
 Formula: **Barratt Sulte**

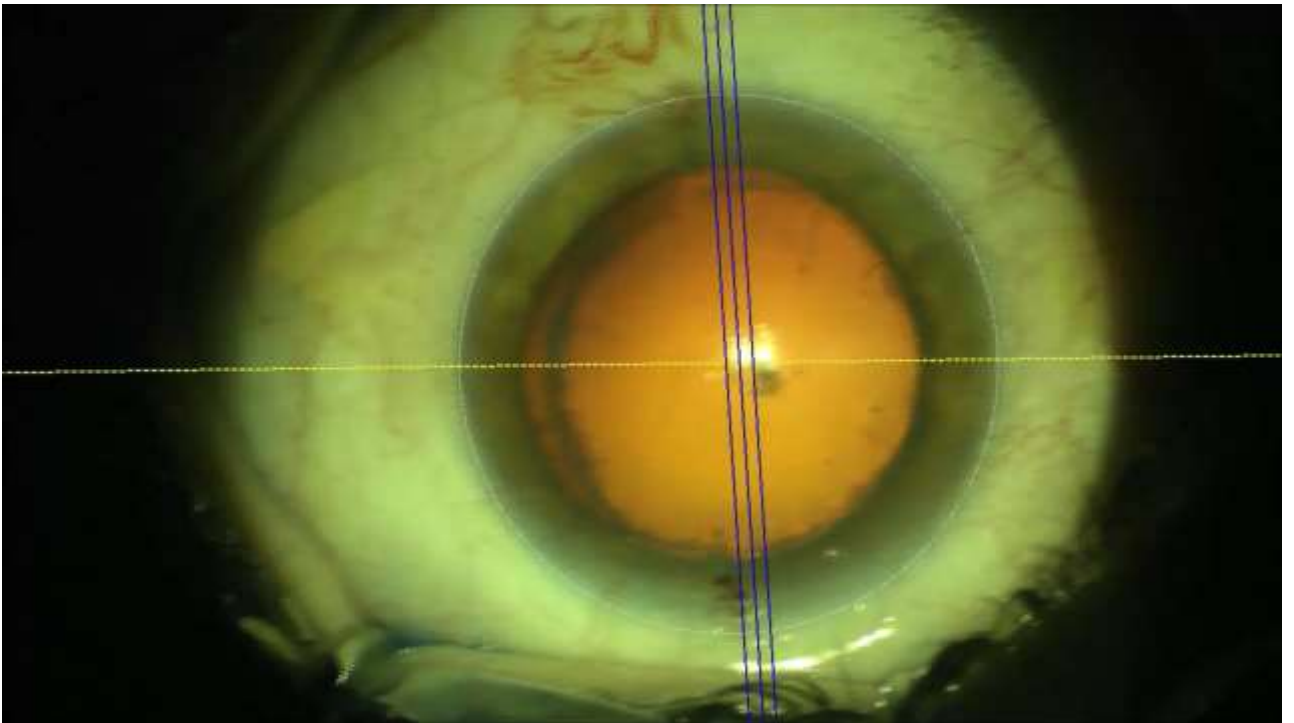
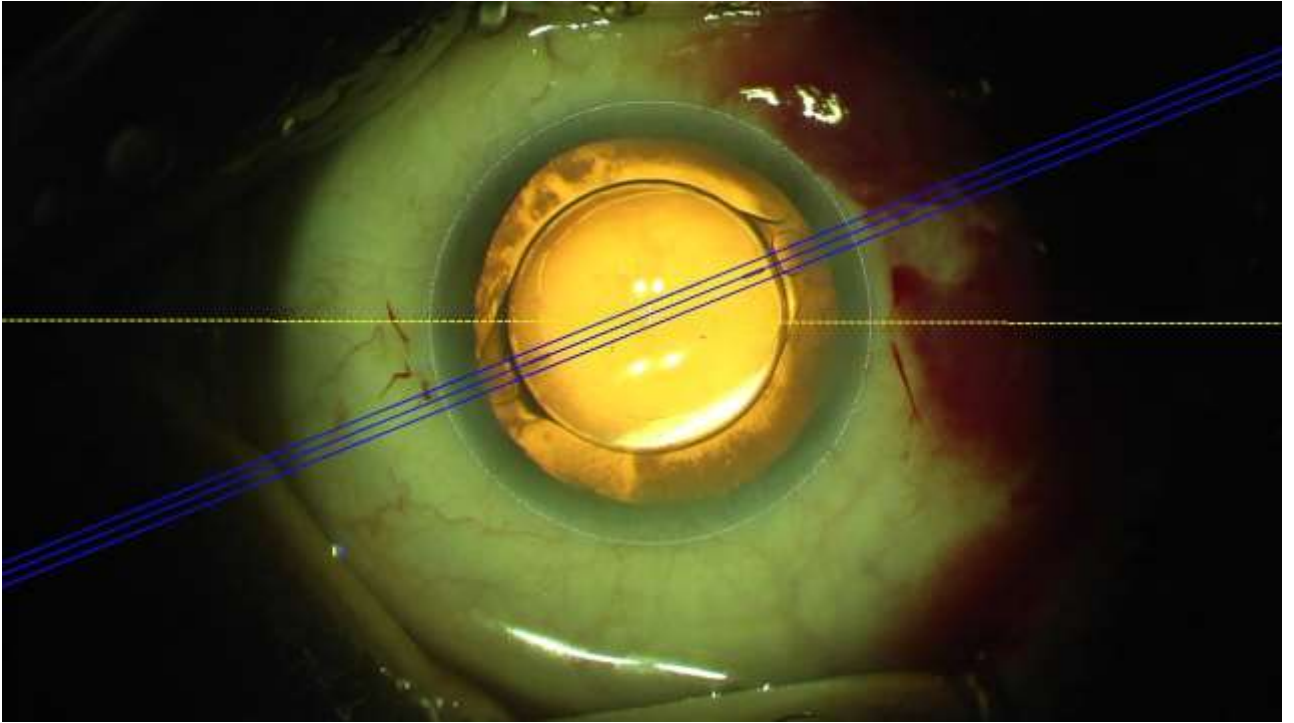
La longueur axiale de l'œil droit dépasse de 0.50 mm la longueur axiale de l'œil gauche. - Remarque: vérifier de nouveau les valeurs de mesure.

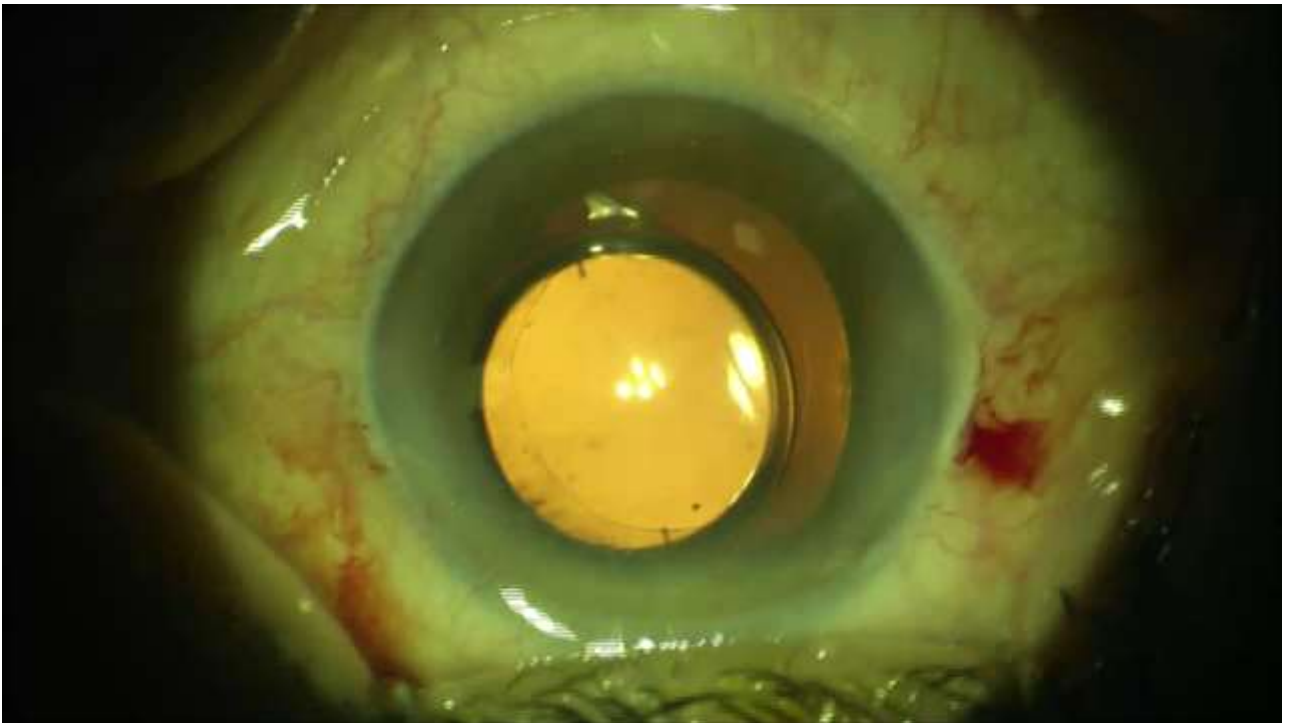
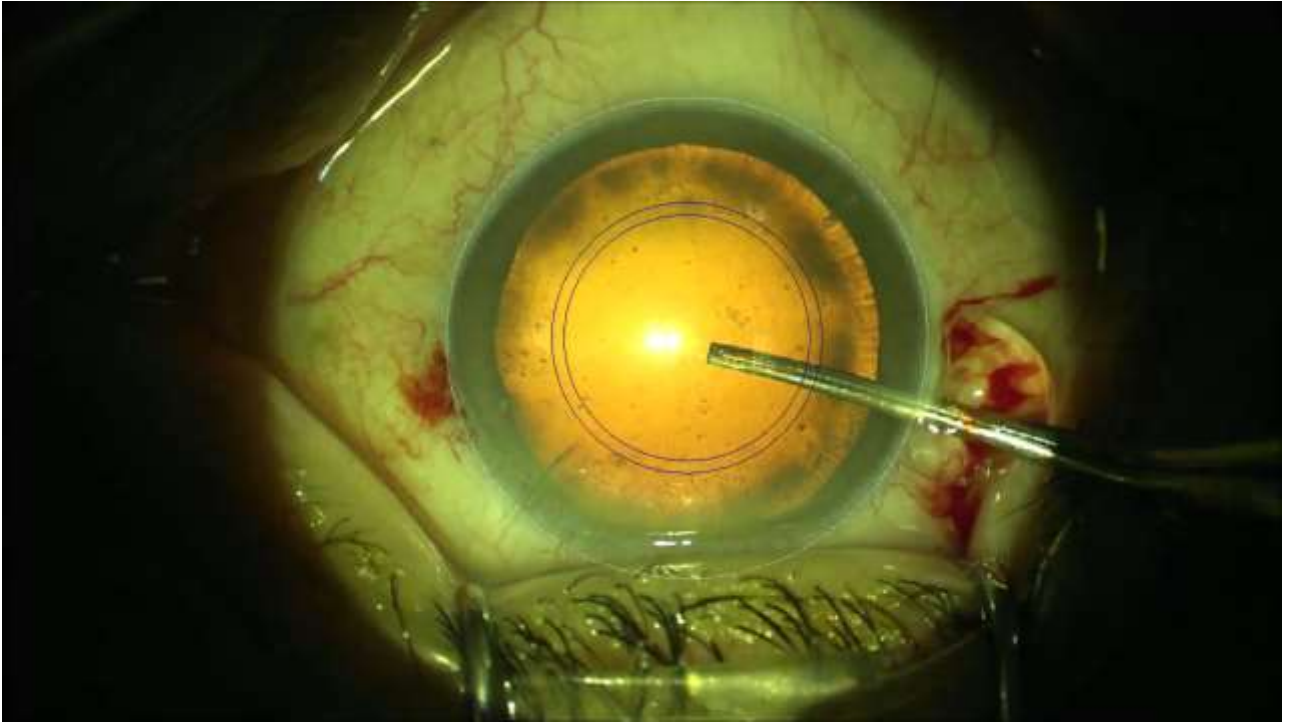
OD		Calcul IOL		OS	
droite				gauche	
(†) Indique une valeur de mesure incertaine. (‡) Indique une valeur modifiée manuellement. — Indique une mesure non réussie.					
AL: 23.46 mm (SD = 11 µm)	WTW: 11,1 mm	AL: 22.90 mm (SD = 14 µm)	WTW: 11,1 mm	AL: 22.90 mm (SD = 14 µm)	WTW: 11,1 mm
ACD: 2,71 mm (SD = 6 µm)		ACD: 2,64 mm (SD = 8 µm)		ACD: 2,64 mm (SD = 8 µm)	
LT: 5,11 mm (SD = 11 µm)		LT: 5,09 mm (SD = 13 µm)		LT: 5,09 mm (SD = 13 µm)	
SE: 42,58 D	ΔD: +1,86 D @ 177°	SE: 41,52 D	ΔD: +2,55 D @ 172°	SE: 41,52 D	ΔD: +2,55 D @ 172°
K1: 41,27 D @ 87°	K2: 43,13 D @ 177°	K1: 40,29 D @ 82°	K2: 42,84 D @ 172°	K1: 40,29 D @ 82°	K2: 42,84 D @ 172°
Ref: —	Av: —	Ref: —	Av: —	Ref: —	Av: —
Ref. obs.: Plan	SUA: +0,00 D @ 0°	Ref. obs.: Plan	SUA: +0,00 D @ 0°	Ref. obs.: Plan	SUA: +0,00 D @ 0°
LB: Phaque; VS: Corps vité; LVC: Non traité; Mode LVC: -		LB: Phaque; VS: Corps vité; LVC: Non traité; Mode LVC: -		LB: Phaque; VS: Corps vité; LVC: Non traité; Mode LVC: -	
Alcon Toric SIBAT(2-9)			Alcon Toric SIBAT(2-9)		
LF: +1,99 DF: +5,00			LF: +1,99 DF: +5,00		
IOL	SE	SE	SE	SE	SE
+24,00	+3,25	178°	-0,81	-0,83	+0,03
+23,50	+3,25	178°	-0,44	-0,45	+0,03
+23,00	+3,25	178°	-0,07	-0,08	+0,02
+22,50	+3,25	178°	+0,29	+0,29	+0,01
+22,00	+3,25	178°	+0,65	+0,65	+0,00
+23,00	+3,10	178°	Erronéitépe		

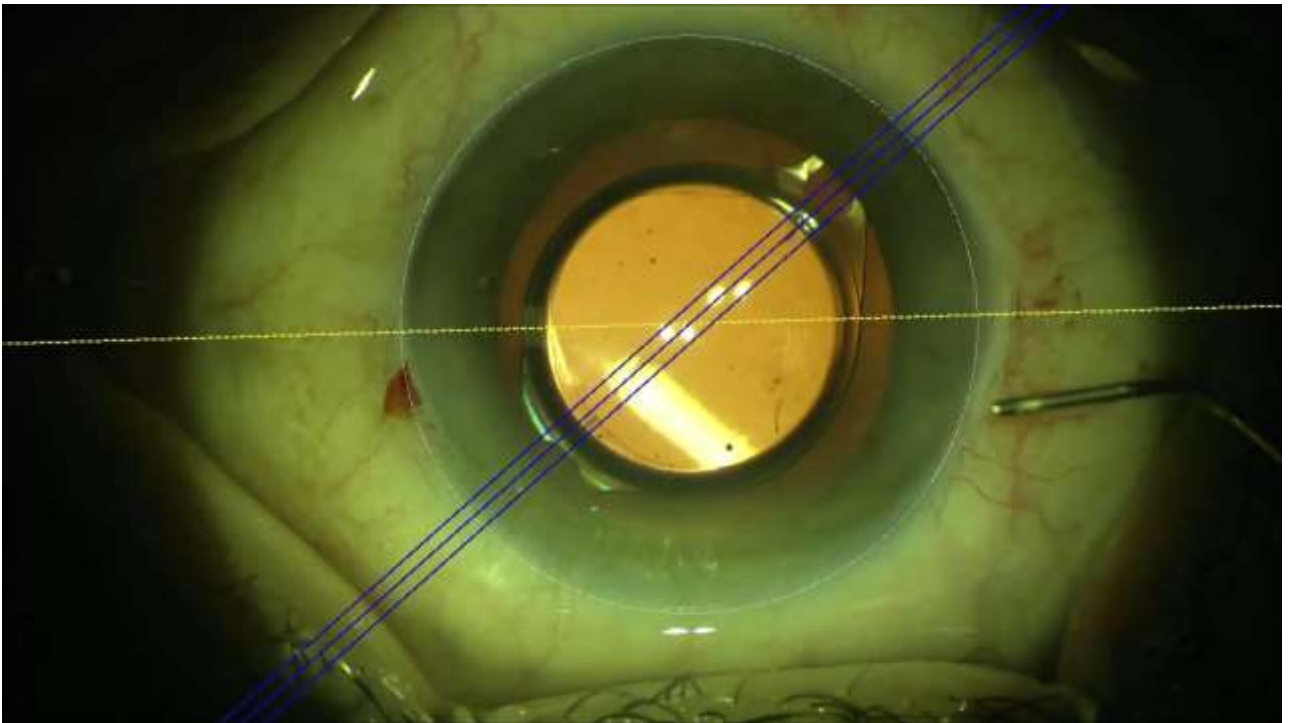
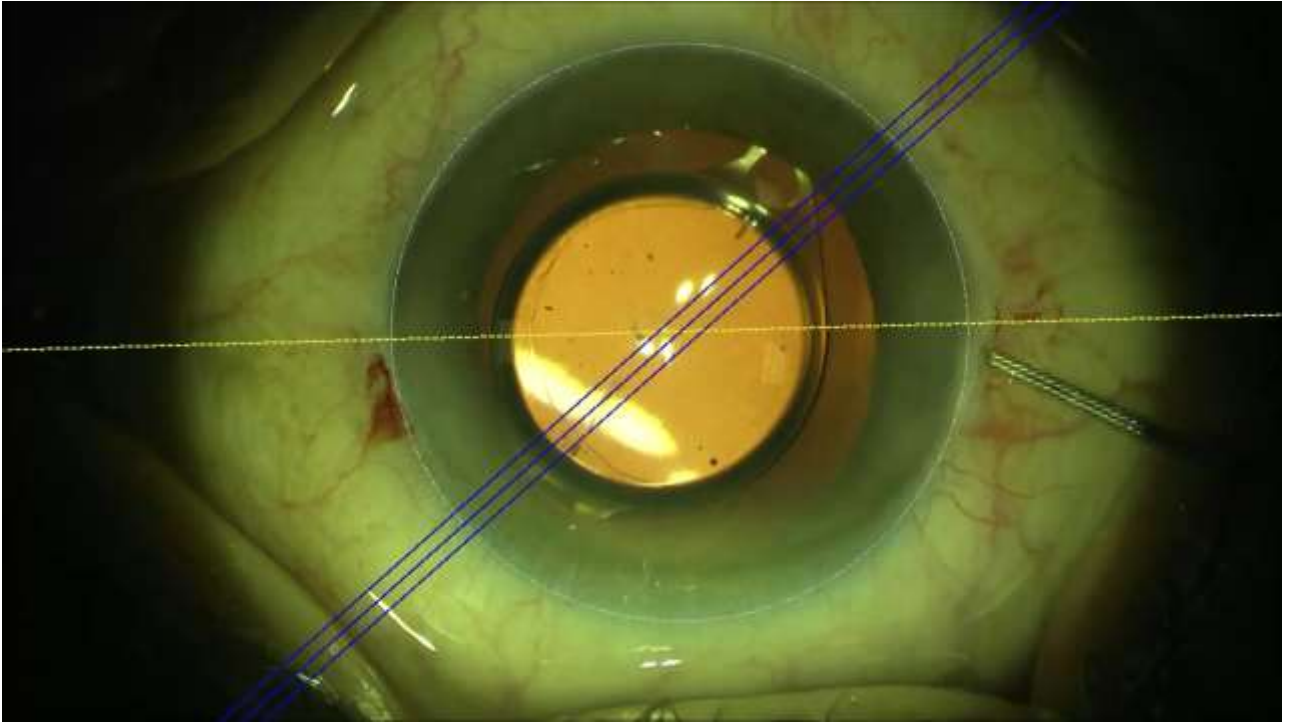
OD		Analyse	
droite			
Valeurs de mesure		Valeurs kératométriques	
AL: 27,34 mm (SD = 15 µm)	ACD: 3,69 mm (SD = 5 µm)	SE: 41,61 D (SD = 2 µm)	K1: 39,27 D @ 78° (SD = 5 µm)
LT: 3,54 mm (SD = 14 µm)		K2: 44,25 D @ 168° (SD = 2 µm)	ΔD: +4,98 D @ 188°
Épaisseur de la cornée centrale		Valeurs WTW et pupille (CW-Chord)	
CCT: 484 µm (SD = 6 µm)		WTW: 12,2 mm	Ix: +0,1 mm Iy: -0,1 mm
		P: 4,5 mm	Px: -0,1 mm Py: -0,3 mm

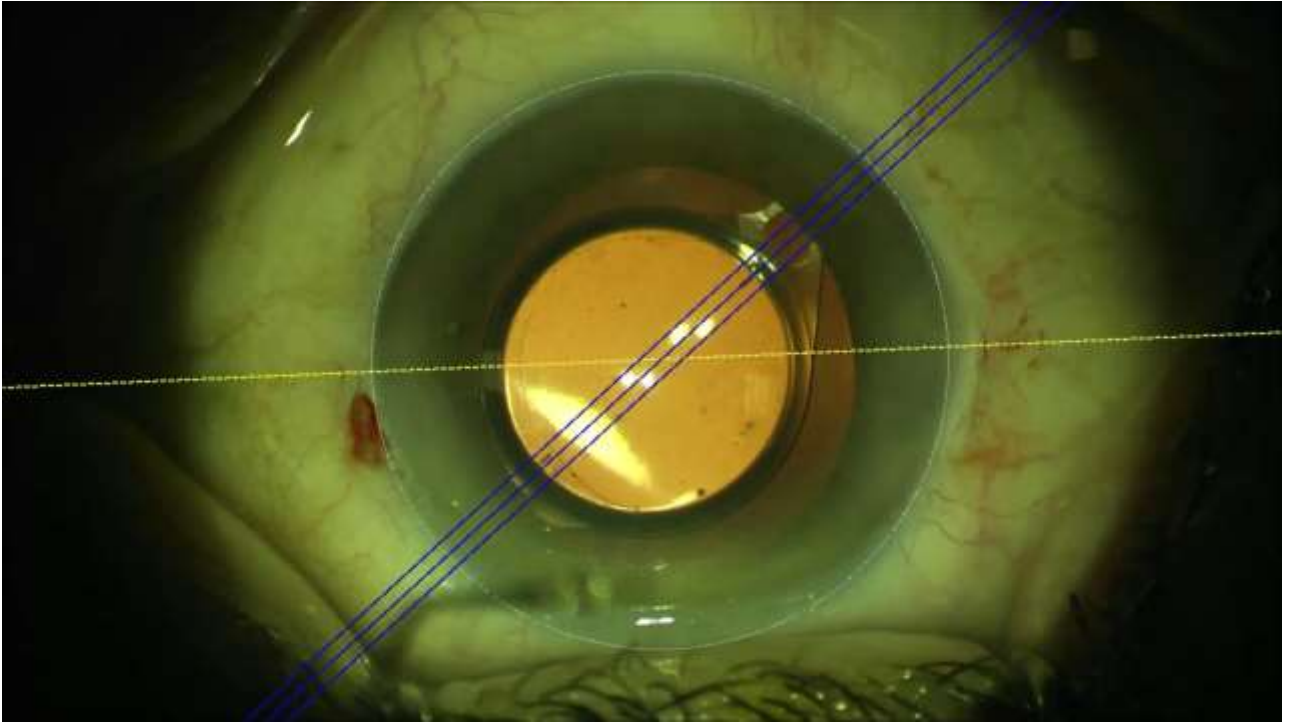












Toric I.O.L.'s : Digital / Manual Marking

- 27 Eyes : astigmatism $> 1,75$ D (Envista)
- Manual Marking : Slit lamp
- Digital Marking : Callisto (IOL Master 700)





Toric I.O.L.'s : Digital / Manual Marking

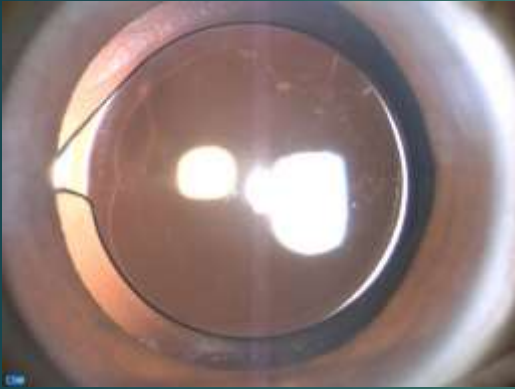
- 27 Eyes : astigmatism $> 1,75$ D (Envista)
- Manual Marking : Slit lamp
- Digital Marking : Callisto (IOL Master 700)



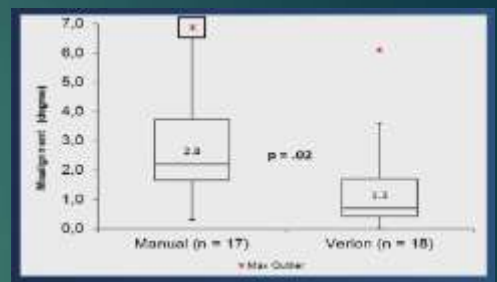
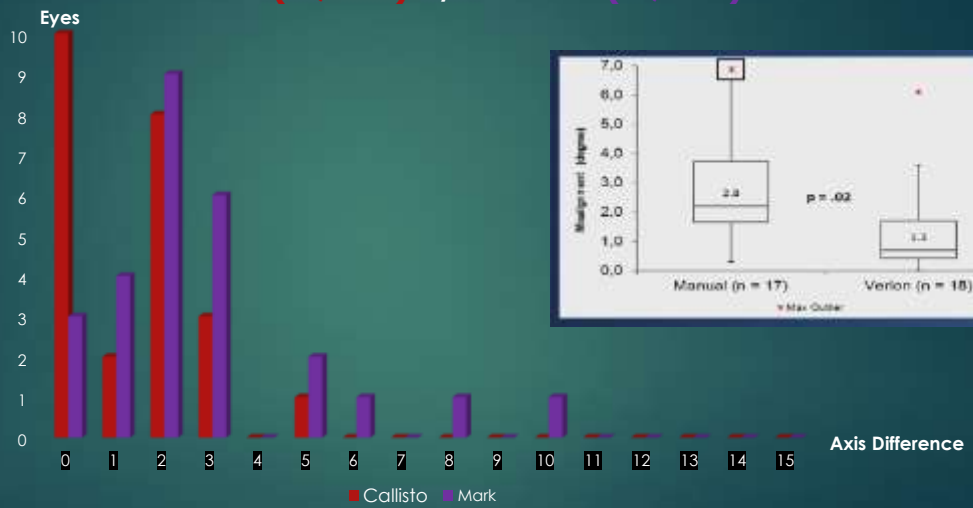
Toric I.O.L.'s : Digital / Manual Marking

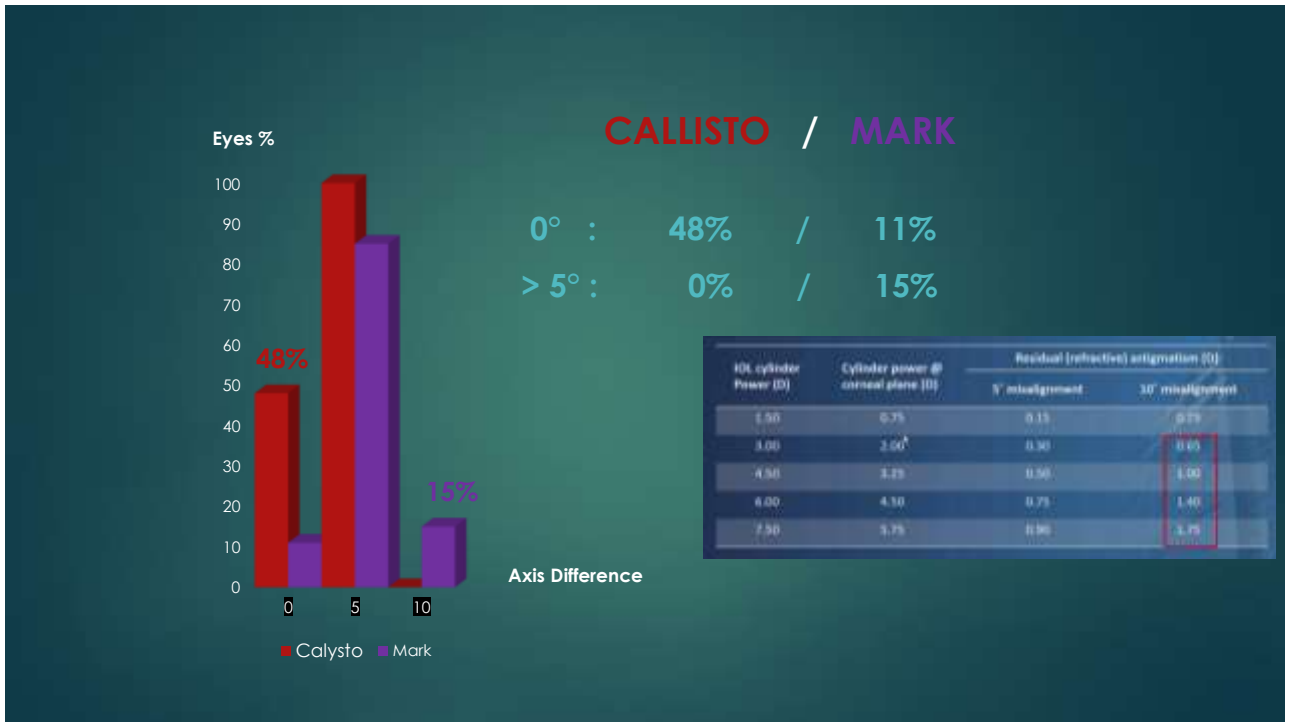


- Digital Marking : Callisto (IOL Master 700)



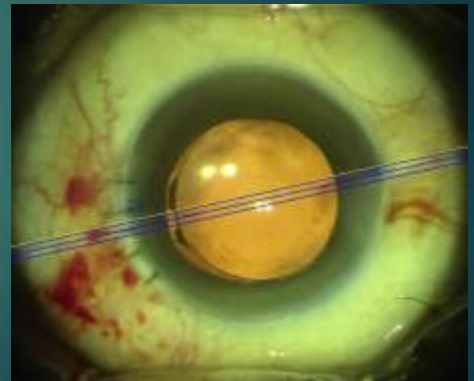
CALLISTO (1,18°) / MARK (2,74°)





Toric I.O.L.'s : Digital / Manual Marking

- Digital : efficient & precise (48% = 0°)



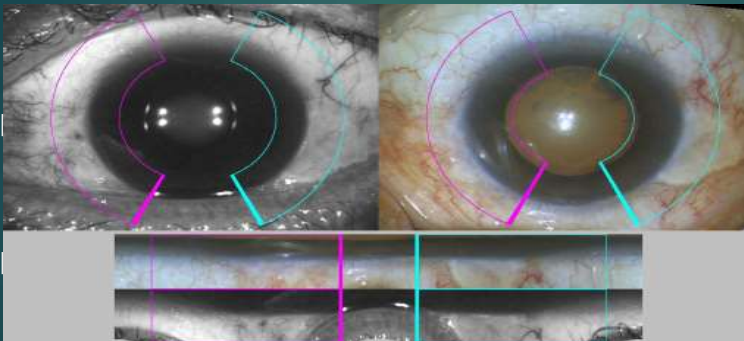


Toric I.O.L.'s : Digital / Manual Marking

- Digital : efficient & precise (48% = 0°)
- Manual Marking : variation (15% > 5°)



Toric I.O.L.'s : Digital / Manual Marking



- Digital Marking : user & patient friendly

